

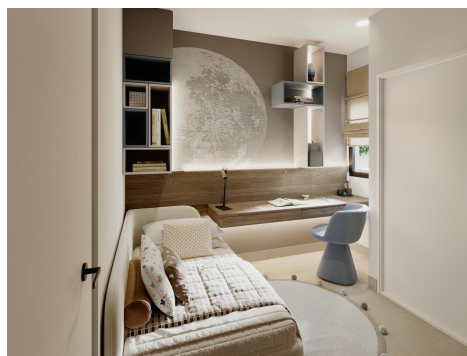
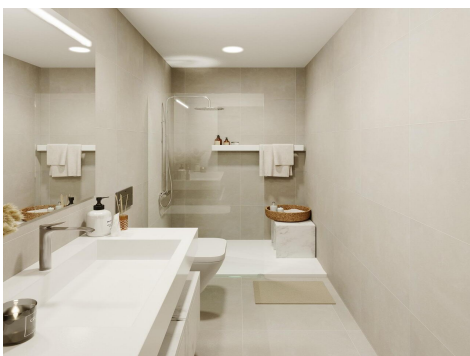
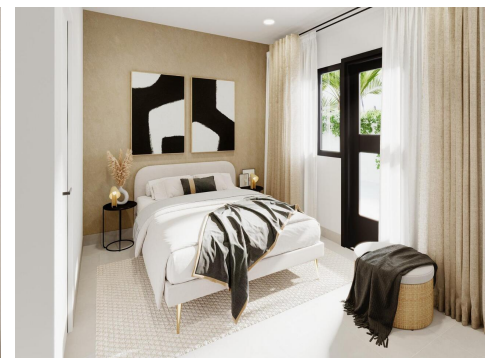
Ref: SP1326

Price: 221,000€



-  **Apartment**
-  **Puerto De Mazarron**
-  **2**
-  **2**
-  **64m² Build Size**
-  **23m² Plot Size**

New Build Homes Just 200 Metres from the Beach in Puerto de Mazarrón; Exclusive coastal living in Costa Cálida; Introducing a new residential development of modern homes in Puerto de Mazarrón, located only 200 metres from the beautiful Playa Negra. Situated in one of the most sought after coastal areas of the Murcia region, this project offers an exceptional opportunity to enjoy Mediterranean living close to the sea, essential amenities and natural surroundings. Puerto de Mazarrón is known for its stunning beaches, crystal clear waters, charming marina and relaxed atmospher...(Ask for More Details!)



VIVIENDA A.1.1

WINDO 02/CONDICIONADO

Superficie del Vivienda 62,51m²

Terreno 440,00m²

Patio y Jardines 47,85m²

TOTAL CONSERVA WINDO 442,36m²





ES +34 605 57 61 31

Email: info@hotpropertiestespana.es

Web: www.hotpropertiestespana.es

New Build Homes Just 200 Metres from the Beach in Puerto de MazarrónExclusive coastal living in Costa CálidaIntroducing a new residential development of modern homes in Puerto de Mazarrón, located only 200 metres from the beautiful Playa Negra. Situated in one of the most sought after coastal areas of the Murcia region, this project offers an exceptional opportunity to enjoy Mediterranean living close to the sea, essential amenities and natural surroundings.Puerto de Mazarrón is known for its stunning beaches, crystal clear waters, charming marina and relaxed atmosphere. With excellent services, outdoor leisure options and a warm climate year round, it is an ideal destination for both permanent living and holiday escapes.Modern design and functional layoutsThis exclusive development is composed of 30 contemporary homes featuring 2 bedrooms and 1 or 2 bathrooms, thoughtfully designed to provide comfort, style and efficiency. The low rise complex includes ground floor units with private terraces and gardens, as well as first floor homes with terraces and private rooftop solariums. Houses offer private parking spaces either on the property or within the residence.Homes are oriented to maximize natural light, with open plan living spaces, large windows and premium finishes. The first phase offers customizable homes with functional layouts that can be personalized to suit your lifestyle needs.Ground floor homes include a private garden, rear patio and on plot parking or community parking.Top floor homes offer a private access area on ground floor, first floor terrace and rooftop solarium, plus allocated parking.Optional extras include private pools on ground floor terraces or jacuzzis on solariums.High quality specificationsEach property includesReinforced entrance doorPre installation for ducted air conditioningComplete bathrooms with furniture, mirror and shower screensOutdoor spaces designed for barbecues, pergolas and chill out areasThis residential community offers a safe, family friendly and established environment, within walking distance of supermarkets, schools, medical services, parks and the beach.Prime location in Puerto de MazarrónDistances to key points of interestPlaya Negra 0.2 kmMazarrón Marina 2 kmMazarrón Park Shopping Centre 5 kmCartagena 35 kmMurcia City 70 kmMurcia Corvera Airport 45 kmGolf courses Camposol and Hacienda del Álamo 25-35 kmEnjoy water sports, hiking and cycling in the nearby Sierra de las Moreras, and discover the best of the Costa Cálida lifestyle.Make the Mediterranean your homeDo not miss the opportunity to secure a new build property just steps from the beach in Puerto de Mazarrón. Contact us today for availability, details and viewing appointments.

ES +34 605 57 61 31

Email: info@hotpropertiestespana.es

Web: www.hotpropertiestespana.es