

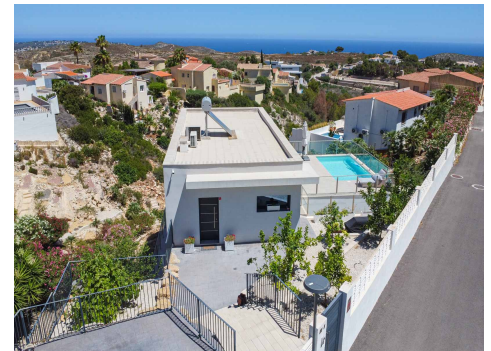
Ref: **MLS77725S**

Price: **950,000€**



-  **Villa**
-  **Benitachell**
-  **4**
-  **3**
-  **199m² Build Size**
-  **836m² Plot Size**
-  **Pool: Yes**

This fantastic modern villa is located in Cumbre del Sol and offers stunning sea views. The villa was built in 2020 with high-quality materials and is distributed over two floors. An automatic gate provides access to the property where parking is provided for 1 car and a motorcycle. A few steps down is the entrance to the villa. You enter a hall with built-in wardrobes and a guest toilet. Oriented towards the south is a spacious living-dining room with an open kitchen with a cooking island. The kitchen is made of unique materials imported from Canada and is equipped with all MIELE brand electr...(Ask for More Details!)





ES +34 605 57 61 31

Email: info@hotpropertieespana.es

Web: www.hotpropertieespana.es

This fantastic modern villa is located in Cumbre del Sol and offers stunning sea views. The villa was built in 2020 with high-quality materials and is distributed over two floors. An automatic gate provides access to the property where parking is provided for 1 car and a motorcycle. A few steps down is the entrance to the villa. You enter a hall with built-in wardrobes and a guest toilet. Oriented towards the south is a spacious living-dining room with an open kitchen with a cooking island. The kitchen is made of unique materials imported from Canada and is equipped with all MIELE brand electrical appliances. The large windows ensure that you enjoy a lot of natural light and of course can enjoy the beautiful view from both your kitchen and your lounge. Through the windows there is also direct access to the adjoining terrace where the swimming pool is located. The ground floor consists of four double bedrooms and two bathrooms. All bedrooms have fitted wardrobes and access to a covered terrace. The villa has ducted air conditioning hot cold and a solar water heater for hot water. There is another storage room under the swimming pool. The plot has a total area of 836 m². On the ground floor there is a large flat garden area. Here it is possible to build a terrace with a larger pool if desired. The plot also contains several fruit trees (pomegranate, lemon, etc.). The villa's southern orientation guarantees that you will always have sun on your terraces. The villa is a stone's throw from the beautiful nature reserve of Granadella where several hiking and mountain bike routes run along impresionante cliffs all the way to Granadella beach. The Lady Elisabeth International School can also be reached on foot. Cumbre del Sol is a unique urbanisation located in a privileged enclave on the Mediterranean, between Jávea and Moraira and surrounded by sea and nature. In addition to all the services Cumbre del Sol has to offer, there are also 2 idyllic beaches with crystal-clear waters. More information such as building specifications, video, plans, etc on request.

ES +34 605 57 61 31

Email: info@hotpropertieespana.es

Web: www.hotpropertieespana.es